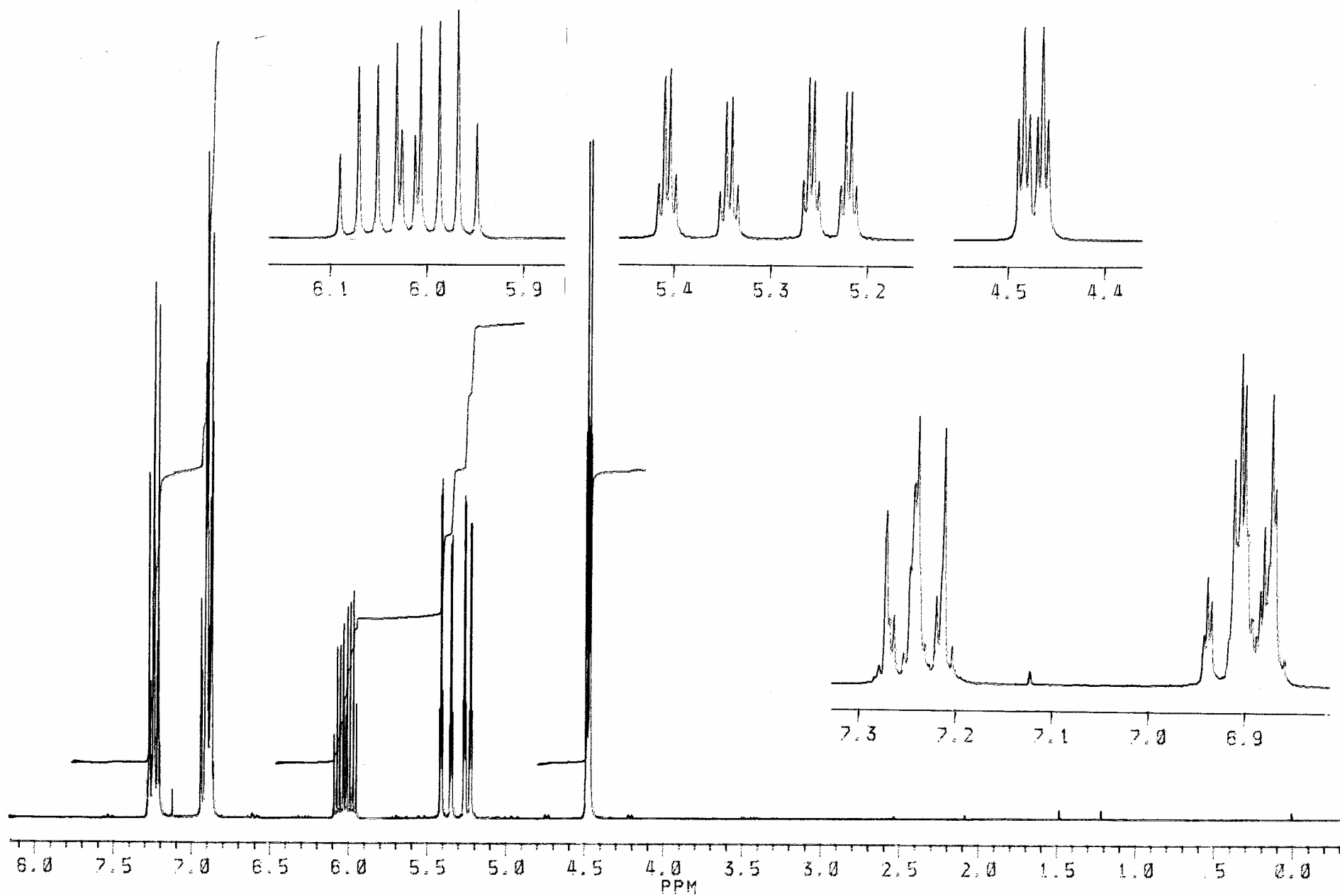


3.2.3 in CDCl₃ ¹H



#	CURSOR	FREQUENCY	PPM	INTENSITY
1	2460	1963.611	7.2710	6.563
2	2466	1962.644	7.2674	2.463
3	2474	1961.423	7.2629	2.557
4	2501	1957.035	7.2467	4.393
5	2508	1955.937	7.2426	7.577
6	2514	1954.892	7.2387	10.040
7	2547	1949.618	7.2192	3.359
8	2559	1947.553	7.2116	9.688
9	3008	1874.714	6.9418	1.927
10	3015	1873.662	6.9379	4.202
11	3021	1872.616	6.9341	3.184
12	3059	1866.390	6.9110	8.599
13	3064	1865.652	6.9083	5.424
14	3070	1864.619	6.9045	12.543
15	3078	1863.436	6.9001	11.546
16	3083	1862.585	6.8969	5.883
17	3091	1861.202	6.8918	2.587
18	3099	1860.016	6.8874	1.930
19	3105	1858.937	6.8834	3.617
20	3112	1857.844	6.8794	5.996
21	3119	1856.661	6.8750	4.611
22	3125	1855.748	6.8716	10.966
23	3131	1854.798	6.8681	7.463
24	4426	1644.550	6.0896	1.567
25	4458	1639.295	6.0701	3.253
26	4491	1634.052	6.0507	3.304
27	4523	1628.799	6.0312	3.649
28	4532	1627.295	6.0257	2.040
29	4555	1623.551	6.0118	1.952
30	4565	1622.026	6.0062	4.015
31	4597	1616.784	5.9868	4.051
32	4629	1611.540	5.9673	4.327
33	4662	1606.290	5.9479	2.185
34	5547	1462.642	5.4160	2.098
35	5557	1461.004	5.4099	6.152
36	5567	1459.372	5.4039	6.429
37	5577	1457.736	5.3978	2.413
38	5653	1445.374	5.3520	1.758
39	5663	1443.737	5.3460	5.134
40	5673	1442.106	5.3399	5.312
41	5683	1440.476	5.3339	1.986
42	5796	1422.091	5.2658	2.257
43	5805	1420.643	5.2605	6.113
44	5814	1419.182	5.2551	5.999
45	5823	1417.737	5.2497	2.174
46	5861	1411.599	5.2270	2.011
47	5870	1410.149	5.2216	5.524
48	5879	1408.685	5.2162	5.522
49	5888	1407.240	5.2108	2.006
50	7089	1212.225	4.4887	7.277
51	7099	1210.687	4.4830	12.791
52	7108	1209.156	4.4774	7.544
53	7122	1206.968	4.4693	7.468
54	7131	1205.433	4.4636	12.733
55	7141	1203.893	4.4579	7.350