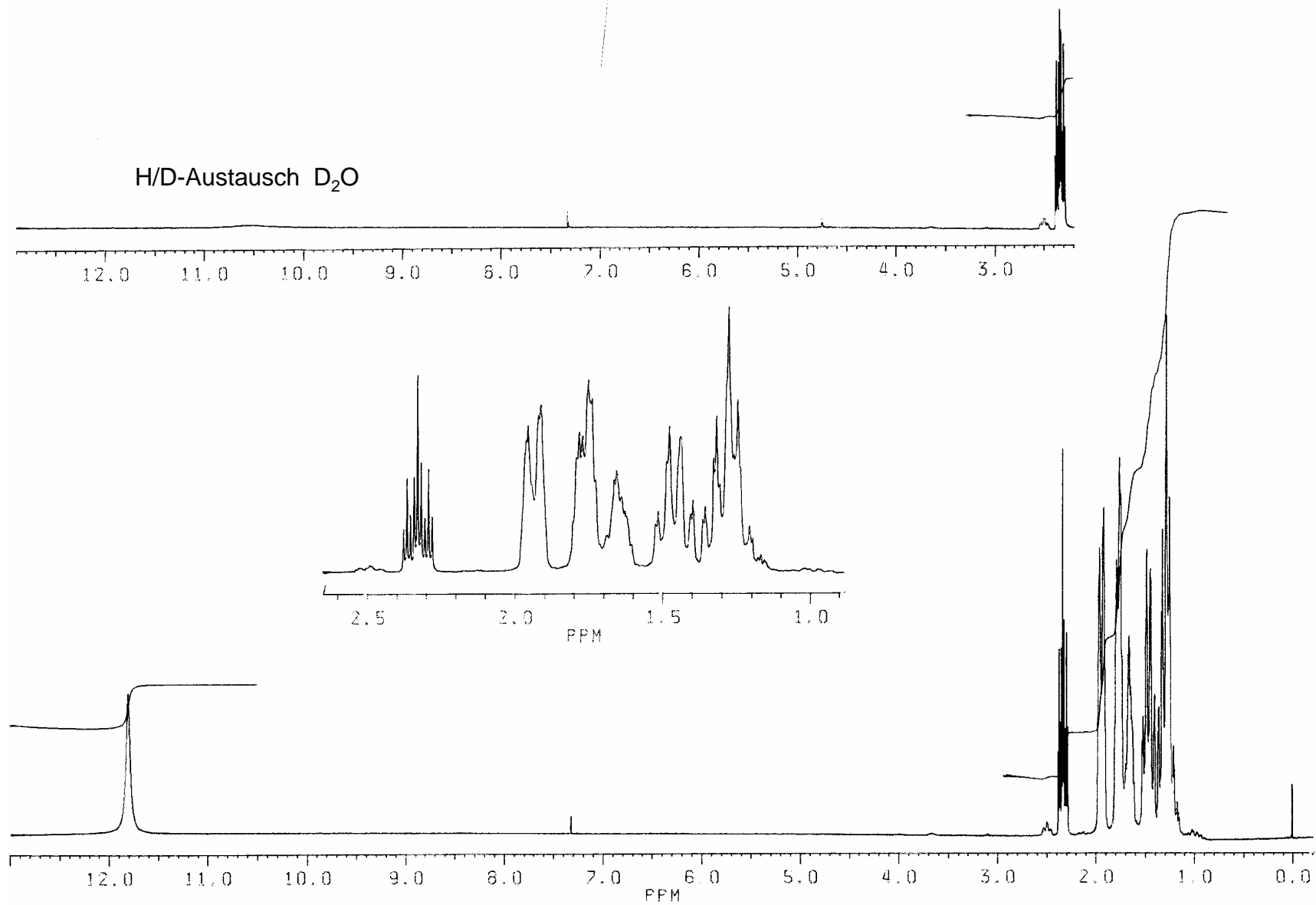


4.5.4.2 in  $\text{CDCl}_3$   $^1\text{H}$



#	CURSOR	FREQUENCY	FPM	INTENSITY
1	1503	3540.677	11.7971	5.221
2	7062	2194.429	7.3116	.483
3	13036	747.337	2.4900	.216
4	13047	744.823	2.4817	.151
5	13180	712.676	2.3746	2.988
6	13194	709.103	2.3627	6.891
7	13209	705.526	2.3507	4.044
8	13225	701.701	2.3380	6.925
9	13240	698.066	2.3259	14.587
10	13255	694.416	2.3137	8.003
11	13270	690.723	2.3014	3.822
12	13285	687.014	2.2891	7.616
13	13301	683.326	2.2768	3.909
14	13695	587.851	1.9587	9.650
15	13703	585.878	1.9521	10.751
16	13746	575.369	1.9171	11.546
17	13758	572.669	1.9081	12.307
18	13905	536.865	1.7888	8.337
19	13917	534.009	1.7793	10.292
20	13931	530.577	1.7678	9.975
21	13956	524.690	1.7482	14.252
22	13971	521.013	1.7360	12.833
23	13984	517.790	1.7252	6.627
24	14030	506.595	1.6879	2.446
25	14036	505.341	1.6837	2.436
26	14063	498.695	1.6616	6.652
27	14074	496.100	1.6530	7.367
28	14093	491.540	1.6378	5.407
29	14108	487.829	1.6254	4.294
30	14115	486.173	1.6199	3.897
31	14135	481.284	1.6036	1.762
32	14156	476.111	1.5863	.242
33	14175	471.654	1.5715	.134
34	14236	456.685	1.5216	3.313
35	14248	453.784	1.5120	4.261
36	14284	445.198	1.4834	8.044
37	14296	442.339	1.4738	10.694
38	14341	431.279	1.4370	9.951
39	14383	421.204	1.4034	4.042
40	14393	418.651	1.3949	5.124
41	14434	408.790	1.3620	3.668
42	14445	406.170	1.3533	4.622
43	14481	397.572	1.3247	8.330
44	14493	394.577	1.3147	11.475
45	14505	391.611	1.3048	6.307
46	14545	381.944	1.2726	19.668
47	14565	377.157	1.2566	8.546
48	14582	372.994	1.2428	12.702
49	14623	363.117	1.2099	2.066
50	14630	361.384	1.2041	3.137
51	14643	358.274	1.1937	2.212
52	14666	352.656	1.1750	.719
53	14678	349.785	1.1654	.971
54	14691	346.602	1.1548	.578
55	14700	344.388	1.1475	.338
56	16122	.021	.0001	1.652