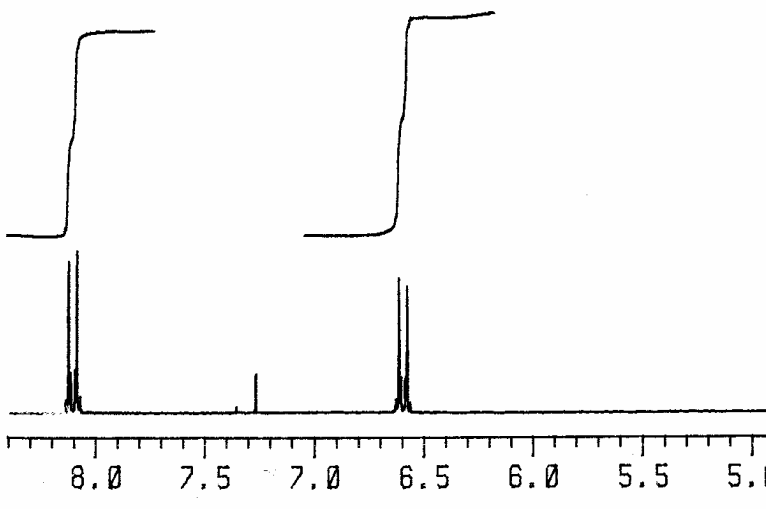
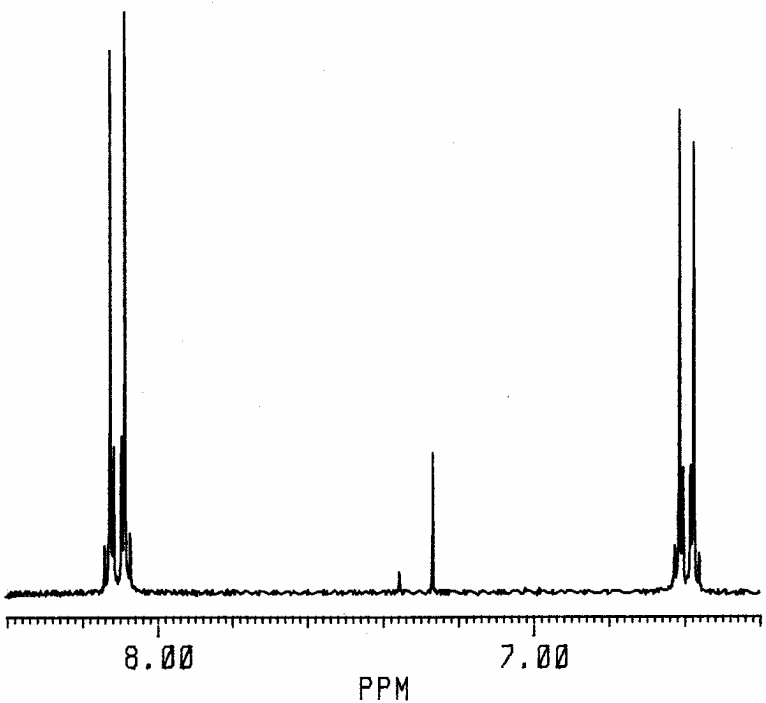


7.3.3 a in CDCl₃ ¹H + Detail



#	CURSOR	FREQUENCY	PPM	INTENSITY
1	1709	2035.604	8.1381	.143
2	1733	2032.147	8.1243	1.777
3	1747	2029.938	8.1154	.476
4	1782	2024.853	8.0951	.496
5	1797	2022.644	8.0863	1.875
6	1820	2019.192	8.0725	.184
7	3028	1840.238	7.3570	.060
8	3178	1818.084	7.2685	.468
9	4262	1657.493	6.6264	.142
10	4285	1654.032	6.6126	1.535
11	4300	1651.833	6.6038	.394
12	4334	1646.739	6.5835	.401
13	4349	1644.556	6.5747	1.431
14	4372	1641.093	6.5609	.121
15	9743	845.443	3.3800	.079
16	10159	783.857	3.1338	.082
17	10202	777.521	3.1084	15.462
18	10290	764.389	3.0559	.266
19	10668	708.495	2.8325	.074
20	13407	6.328	.0253	.071
21	15428	3.259	.0130	.343
22	15450	-.017	-.0001	9.006
23	15457	-1.082	-.0043	.072
24	15473	-3.358	-.0134	.207