

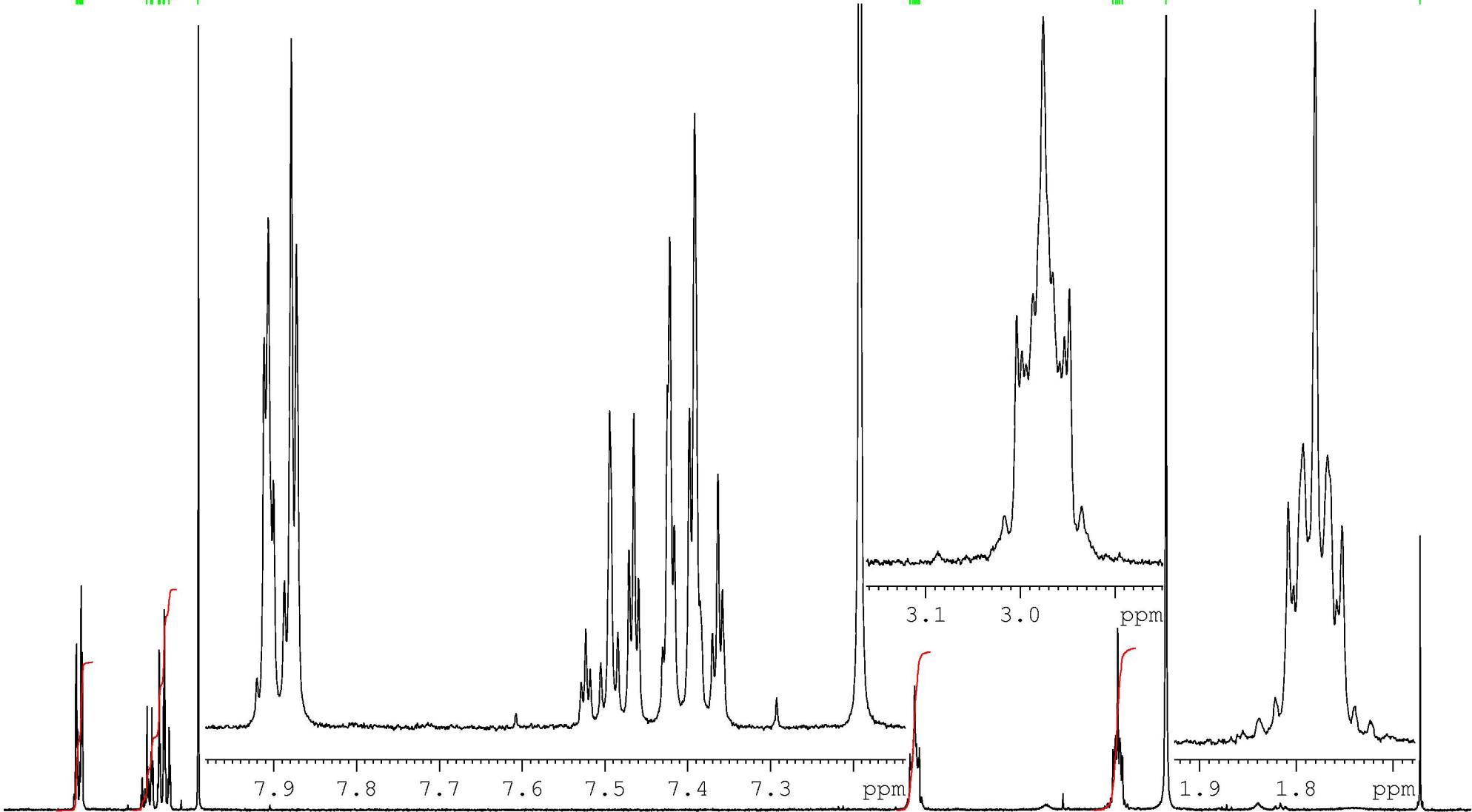
7.91
7.90
7.89
7.88
7.87
7.49
7.47
7.46
7.46
7.42
7.42
7.40
7.39
7.36
7.19

1,4-Dibenzoylbutan

3.00
3.00
2.99
2.98
2.97
2.95
2.95

1.81
1.79
1.78
1.77
1.75
1.50

0.00



8.0 7.5 7.0 6.5 6.0 5.5 5.0 4.5 4.0 3.5 3.0 2.5 2.0 1.5 1.0 0.5 ppm

4.00

5.96

4.27

4.38